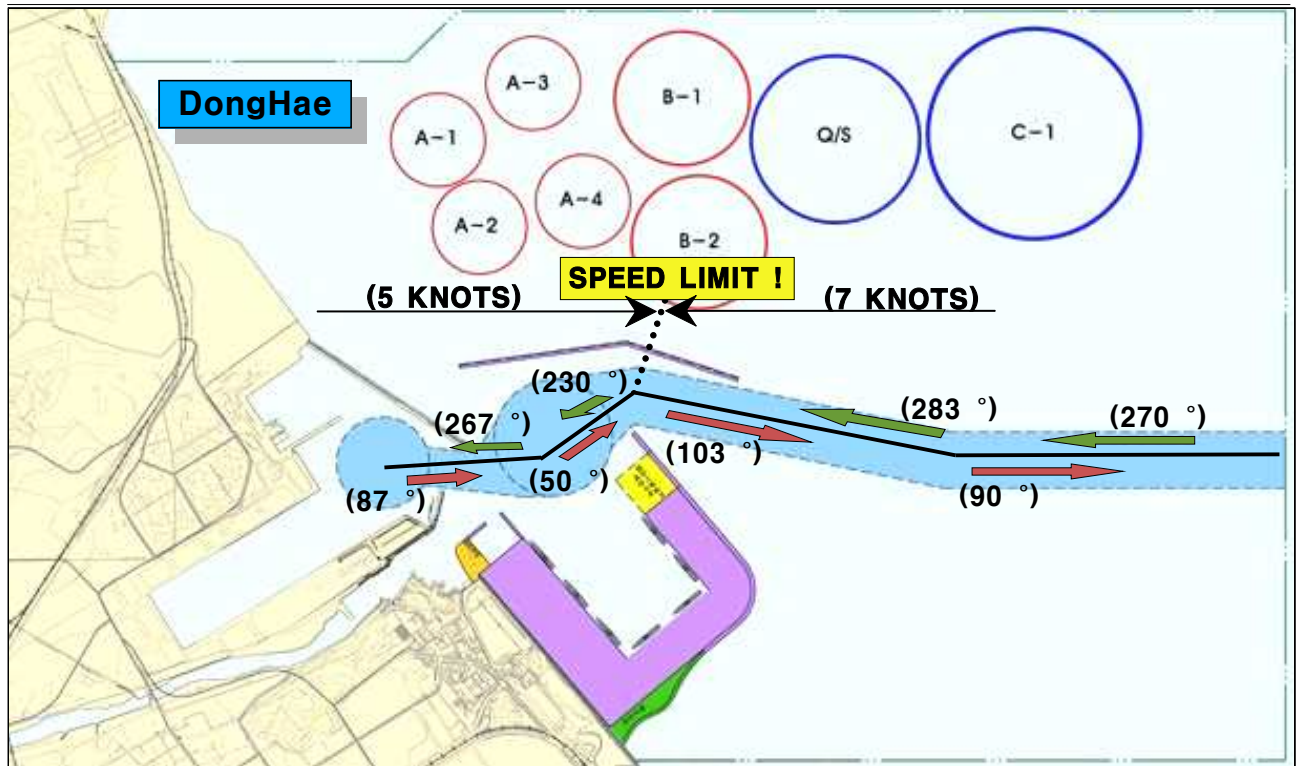


< 동 해 항 > DONGHAE



(동해, 옥계, 삼척, 묵호 & 속초)

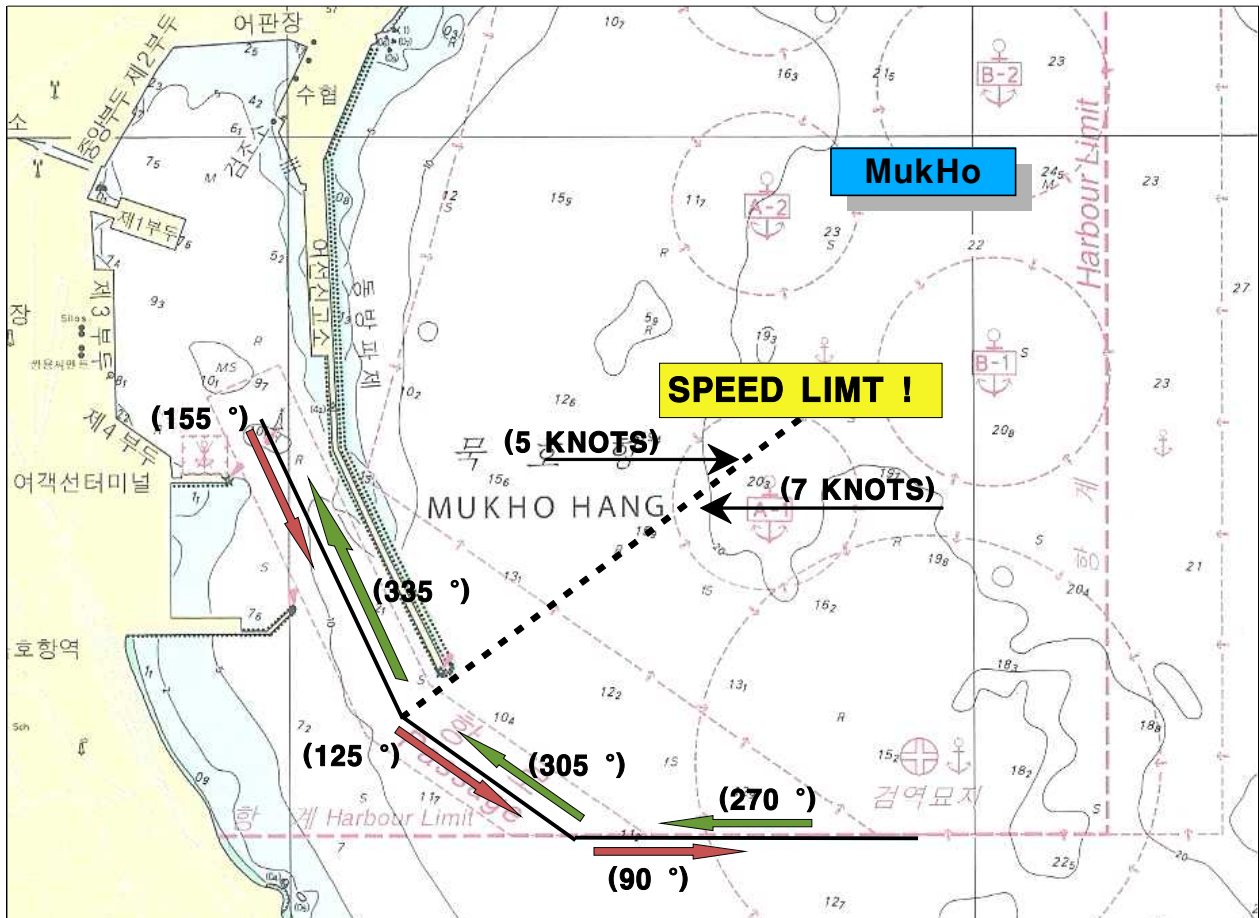
Mooring & Tug arrangement

- 1) Berthing to (PORT) or (STBD) without turning
- 2) Berthing to (PORT) or (STBD) after turning
- 3) Mooring lines : Head line - 4 / Spring line - 2
- 4) First line : Spring line on both FWD & AFT station
- 5) Tug arrangement : Bow, (PORT) or (STBD)

Stern, (PORT) or (STBD)

*3rd tug : for pushing assistance

< 목 호 항 > MUKHO



(동해, 옥계, 삼척, 목호 & 속초)

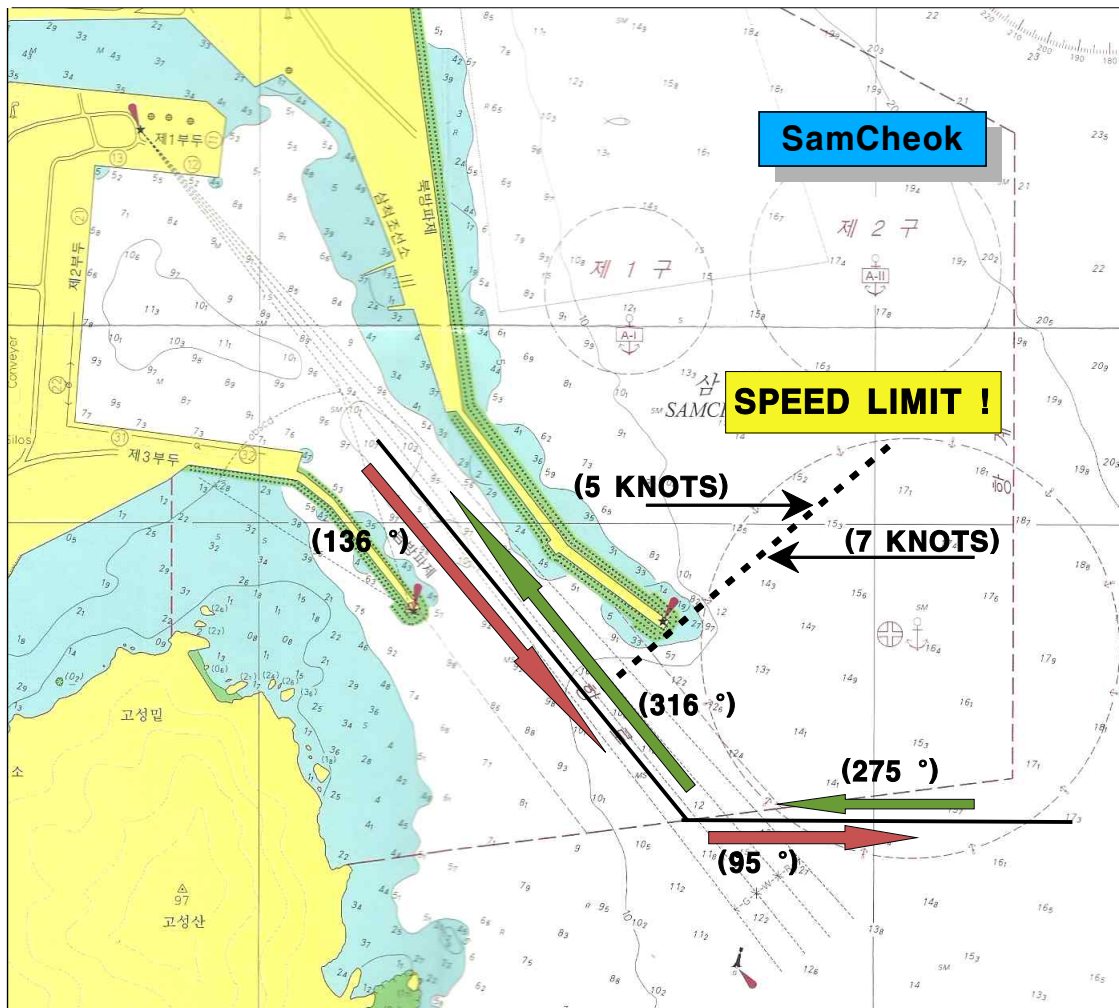
Mooring & Tug arrangement

- 1) Berthing to (PORT) or (STBD) without turning
- 2) Berthing to (PORT) or (STBD) after turning
- 3) Mooring lines : Head line - 4 / Spring line - 2
- 4) First line : Spring line on both FWD & AFT station
- 5) Tug arrangement : Bow, (PORT) or (STBD)

Stern, (PORT) or (STBD)

*3rd tug : for pushing assistance

< 삼척항 > SAMCHEOK



(동해, 옥계, 삼척, 묵호 & 속초)

Mooring & Tug arrangement

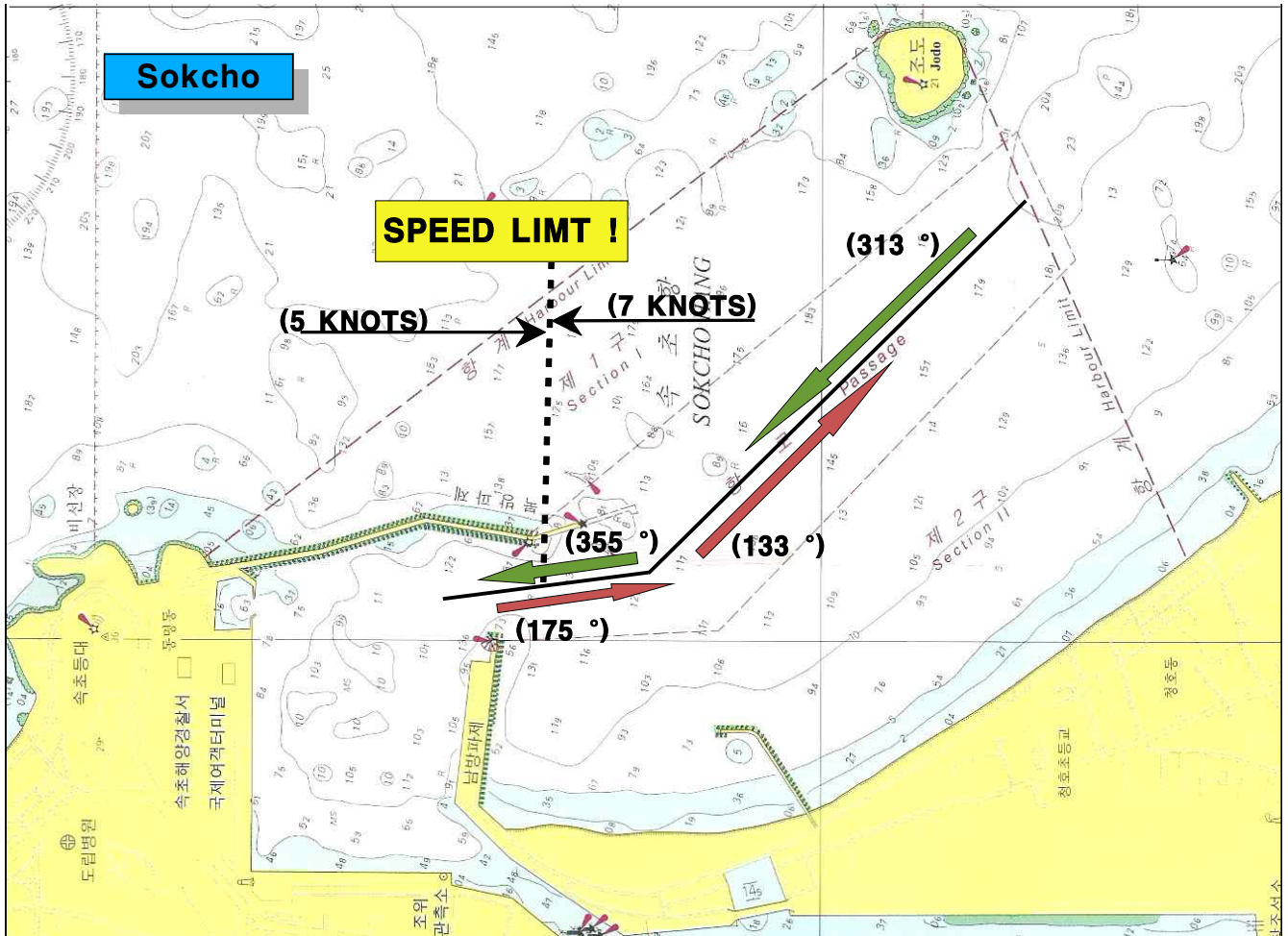
- 1) Berthing to (PORT) or (STBD) without turning
- 2) Berthing to (PORT) or (STBD) after turning
- 3) Mooring lines : Head line - 4 / Spring line - 2
- 4) First line : Spring line on both FWD & AFT station
- 5) Tug arrangement : Bow, (PORT) or (STBD)

Stern, (PORT) or (STBD)

*3rd tug : for pushing assistance

<속 초 항 >

SOKCHO

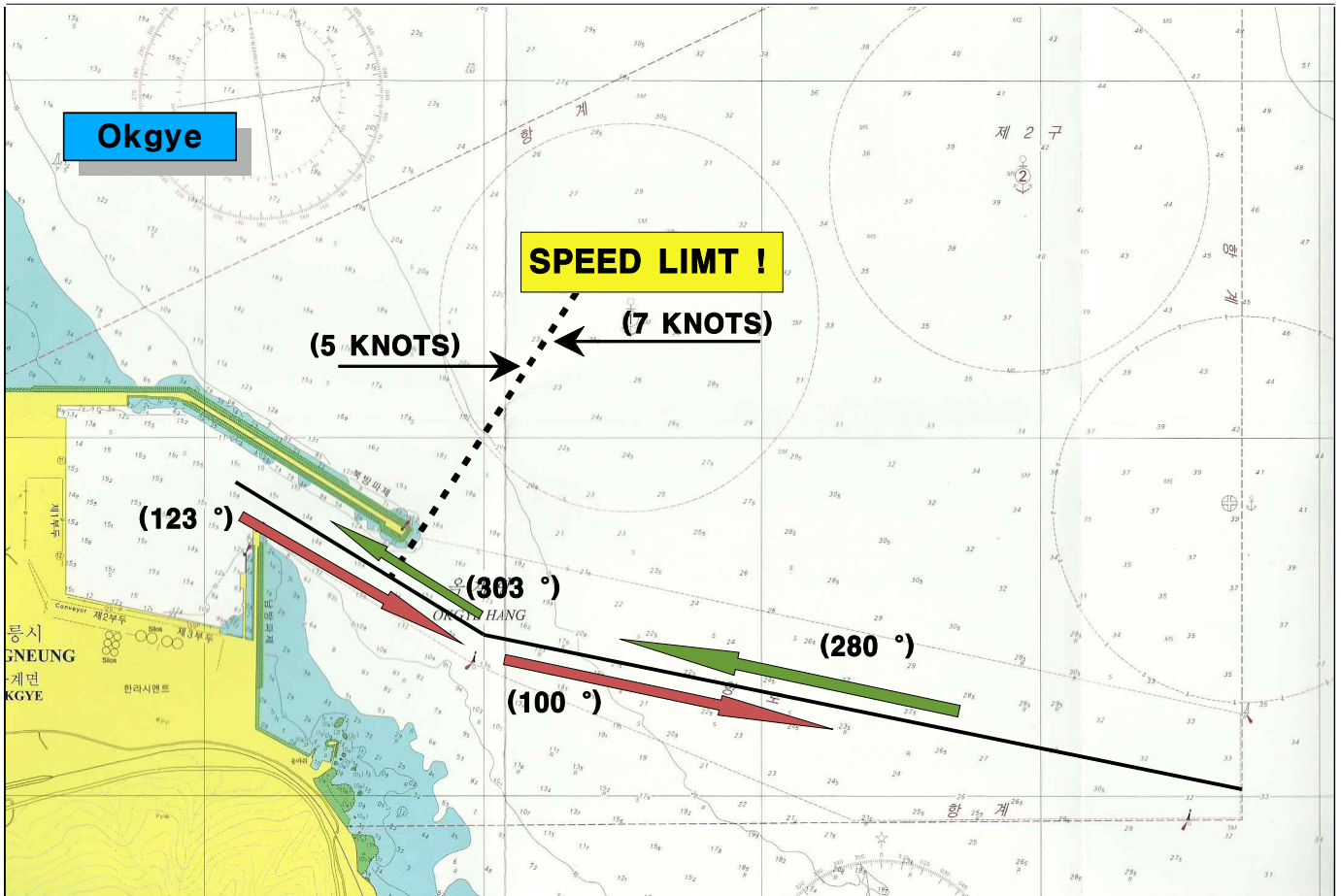


(동해, 옥계, 삼척, 묵호 & 속초)

Mooring & Tug arrangement

- 1) Berthing to (PORT) or (STBD) without turning
- 2) Berthing to (PORT) or (STBD) after turning
- 3) Mooring lines : Head line - 4 / Spring line -2
- 4) First line : Spring line on both FWD & AFT station
- 5) Tug arrangement : Bow, (PORT) or (STBD)
Stern, (PORT) or (STBD)
*3rd tug : for pushing assistance

< 옥 계 항 > OKGYE



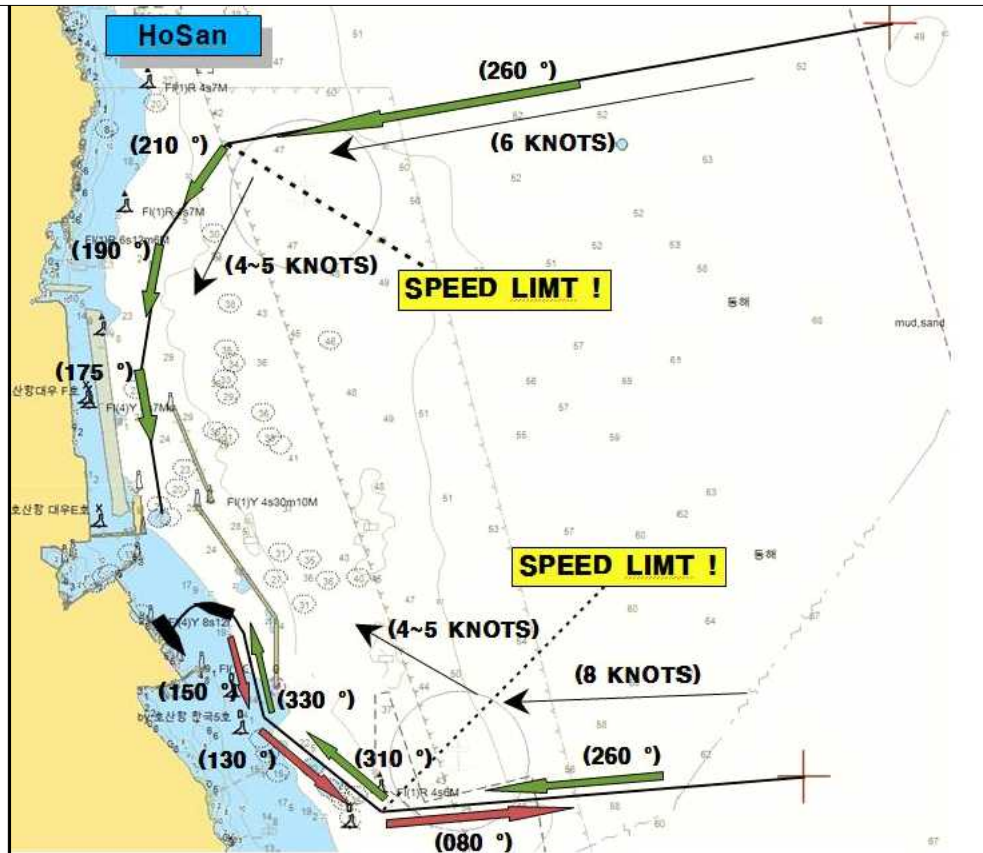
(동해, 옥계, 삼척, 묵호 & 속초)

Mooring & Tug arrangement

- 1) Berthing to (PORT) or (STBD) without turning
- 2) Berthing to (PORT) or (STBD) after turning
- 3) Mooring lines : Head line – 4 / Spring line – 2
- 4) First line : Spring line on both FWD & AFT station
- 5) Tug arrangement : Bow, (PORT) or (STBD)
Stern, (PORT) or (STBD)
*3rd tug : for pushing assistance

< 호 산 항 >

HOSAN



(호산)

Mooring & Tug arrangement for LNG

- 1) Berthing to (PORT) without turning
- 2) Mooring lines : Head line -3 / Breast line -4 / Spring line -2
- 3) First line : 2 Spring lines on both FWD & AFT station
- 4) Tug arrangement : Alfa tug - Bow shoulder (STBD)
 Bravo tug - Sunken bitt (STBD)
 Charlie tug - Sunken bitt (STBD)
 Delta tug - Stern center lead