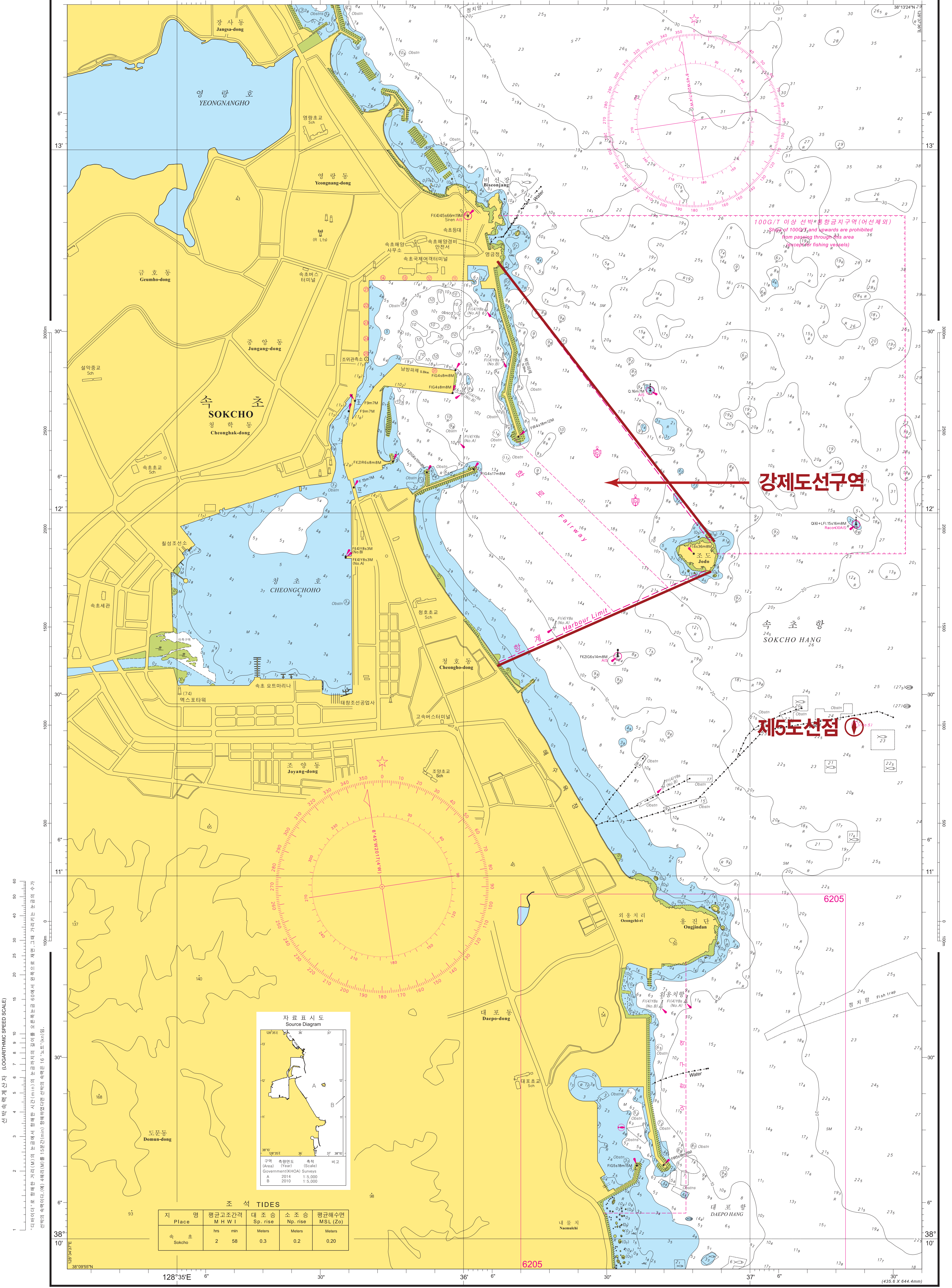




세계측지계
WGS-84

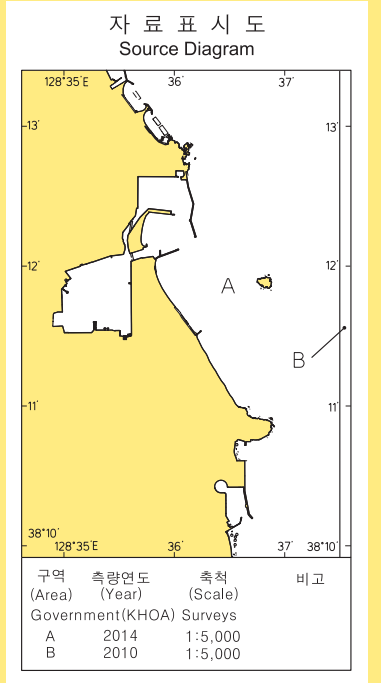
No.1506

동해항 도선구 (속초항)



선박속력계 산자 (LOGARITHMIC SPEED SCALE)

“다이버더”로 광해한 거리(M)와 논로에서 정해진 시간(min)의 논로거리의 길이를 오일러의 수기
신박의 속력이다. (예) 4해리(M)를 15분(min) 정해하였던 선박의 속력은 16 “노트”(kn)일.



조 석 TIDES				
지	명	평균고조간격 M H W I	대 조 승 Sp. rise	소 조 승 Np. rise
속	초	hrs min	Meters	Meters
속	초	2 58	0.3	0.2
				0.20

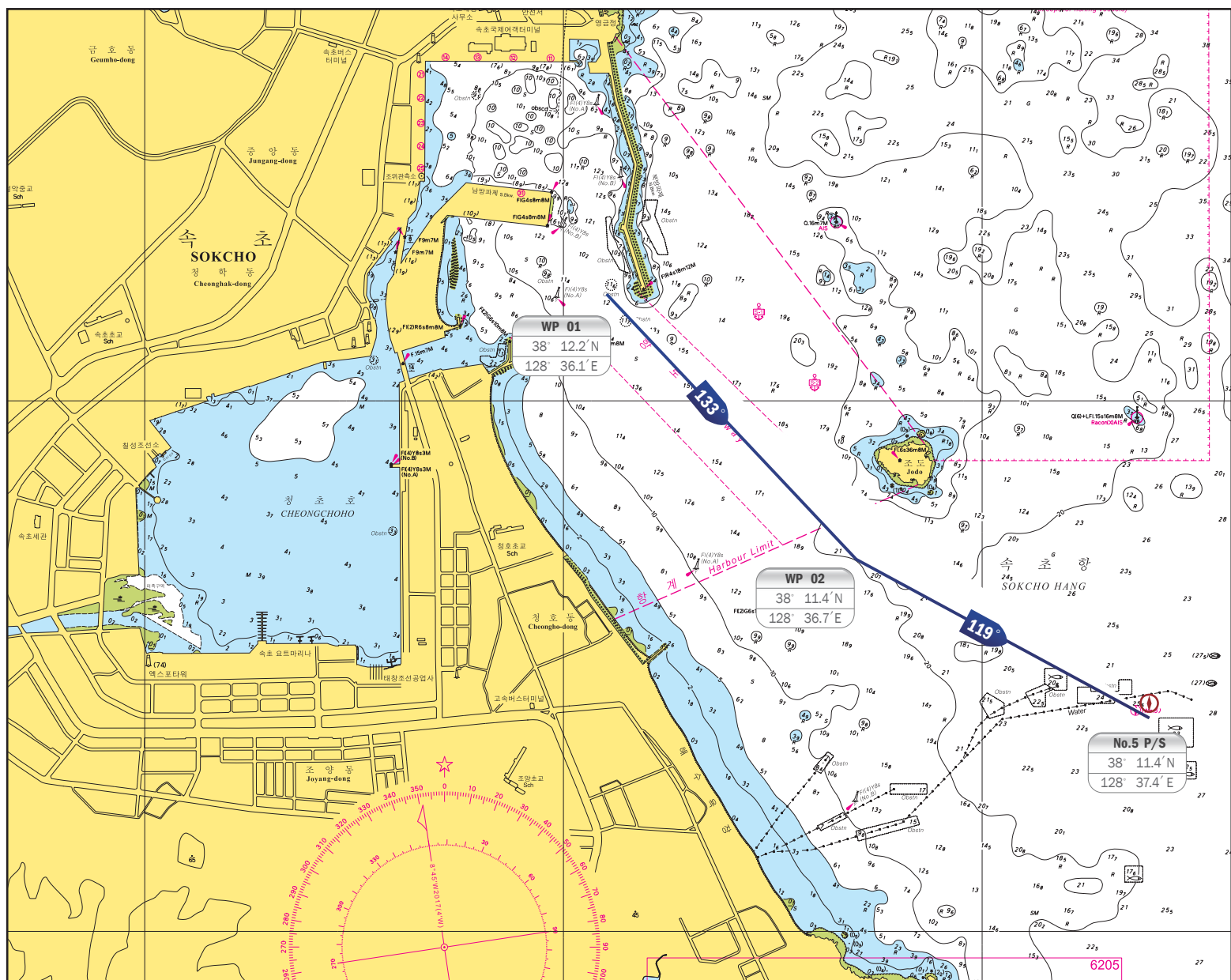
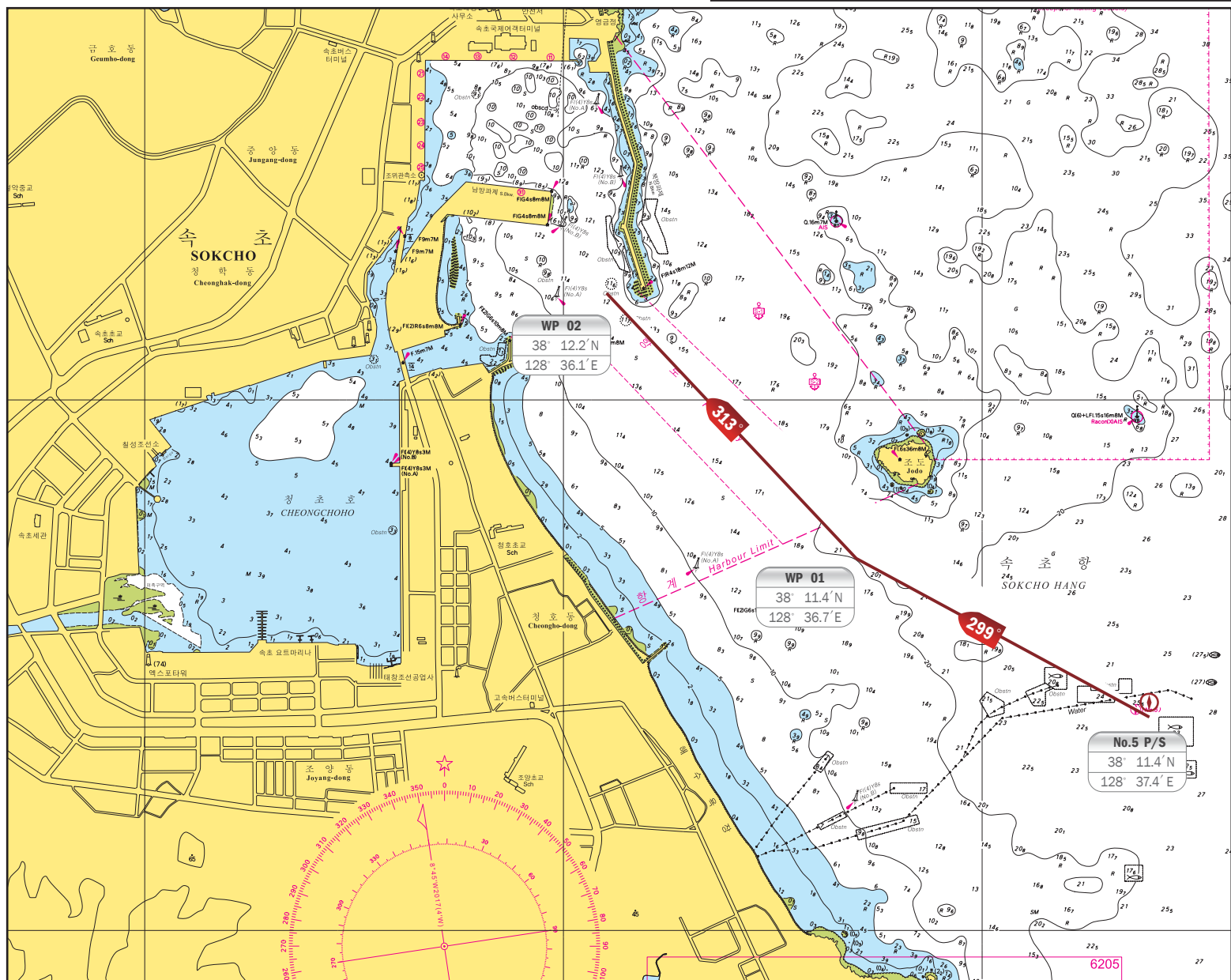
소개정 (Small Corrections) (17)524

2015년 9월 대한민국 해양수산부 국립해양조사원 발행
Published, Sep. 2015 by the Korea Hydrographic and Oceanographic Agency
Ministry of Oceans and Fisheries, Republic of Korea

2017년 8월 제2인쇄
2nd Reprinted, Aug. 2017

No.1506

- No.9 & No.10 Passage Plan for Donghae port
- This map is for reference only and updated January 2019



The Pilotage Passage Plan (No. 09)

No.5 P/S to Berth #31 of Sokcho (Inbound)

Outbound...

WGS-84

Description	Latitude	Course	Distance	Togo	Chart File	Remarks
	Longitude					
No.5 P/S	38° 11.4' N	-	-	01.7'		
	128° 37.4' E	299°	0.6'			
WP 01	37° 11.7' N			313°	0.7'	01.1'
	128° 36.7' E					
WP 02	38° 12.2' N	355°	0.4'	00.4'		
	128° 36.1' E					
Berth # 31					Sokcho	

The Pilotage Passage Plan (No. 10)

Berth #31 of Sokcho to No.5 P/S (outbound)

Inbound...

WGS-84

[illegible]

▲ Donghae port service on VHF Ch 12 / Mukho Pilot on VHF Ch 10

IMPORTANT NOTICE

1. Masters of all vessels calling in Donghae are advised to report the followings to Donghae port service
 - a) 1 Hour prior arrival notice to the pilot boarding ground
 - b) All information that Donghae port service needs to know(ship's name/GT/Last port of call etc)
 - c) Correct ETA when 2 miles off from the breakwater
 - d) When arriving at or leaving An anchorage, Time of Anchor or time anchor aweigh
2. Masters of all vessels are advised to watch VHF on 12 and 16